

March 3, 2010

New York State Department  
of Environmental Conservation  
Division of Solid & Hazardous Materials  
Pesticide Product Registration

## DIRECTIONS FOR USE - VECTOLEX CG

### APPLICATION DIRECTIONS MOSQUITO CONTROL

VectoLex CG is a selective microbial insecticide for use against mosquito larvae in a variety of habitats. VectoLex CG can be applied to areas that contain fish, other aquatic life, and plants. VectoLex CG can be applied to areas used by or in contact with humans, pets, horses, livestock, birds, or wildlife.

#### I. For control of mosquito larvae species\* in the following non-crop sites:

Habitat	Rate Range
---------	------------

<b>Wastewater:</b>	5-20 lbs/acre**
--------------------	-----------------

Sewage effluent, sewage lagoons, oxidation ponds, septic ditches, animal waste lagoons, impounded wastewater associated with fruit and vegetable processing.

<b>Stormwater/Drainage Systems:</b>	5-20 lbs/acre**
-------------------------------------	-----------------

Storm sewers, catch basins, drainage ditches, retention, detention, and seepage ponds.

<b>Marine/Coastal Areas:</b>	5-20 lbs/acre**
------------------------------	-----------------

Salt marshes, mangroves, estuaries.

<b>Water Bodies:</b>	5-20 lbs/acre**
----------------------	-----------------

Natural and manmade aquatic sites such as lakes, ponds, rivers, canals, streams, and livestock watering ponds and troughs.

<b>Dormant Rice Fields:</b>	5-20 lbs/acre**
-----------------------------	-----------------

Impounded water in dormant rice fields. (For application only during the interval between harvest and preparation of the field for the next cropping cycle.)

<b>Waste Tires:</b>	20-80 lbs/acre <sup>(1)</sup>
---------------------	-------------------------------

Tires stockpiled in dumps, landfills, recycling plants, and other similar sites.

<sup>(1)</sup>0.5-2 lbs/1000 sq. ft.

#### II. For the control of mosquito larvae species\* in agricultural/crop sites where mosquito breeding occurs.

<b>Habitats:</b>	5-20 lbs/acre**
------------------	-----------------

Rice, pastures/hay fields, orchards, citrus groves, irrigated crops.

Apply uniformly by aerial or conventional ground equipment. Reapply as needed after 1-4 weeks.

\*Mosquito species effectively controlled by VectoLex CG:

*Culex* spp.

*Aedes vexans*

*Ochlerotatus melanimon* (*Aedes melanimon*)

*Ochlerotatus stimulans* (*Aedes stimulans*)

*Ochlerotatus nigromaculis* (*Aedes nigromaculis*)

*Psorophora columbiae*

*Psorophora ferox*

*Ochlerotatus triseriatus* (*Aedes triseriatus*)

*Ochlerotatus sollicitans* (*Aedes sollicitans*)

*Anopheles quadrimaculatus*

*Coquillettidia perturbans*

\*\*Use higher rates (10 to 20 lbs/acre) in areas where extended residual control is necessary, or in habitats having deep water or dense surface cover.

Avoiding spray drift at the application site is the responsibility of the applicator. The interaction of many equipment and weather related factors determine the potential for spray drift. The applicator and the treatment coordinator are responsible for considering all these factors when making decisions.

#### NOTICE TO USER

To the fullest extent permitted by law, seller makes no warranty, express or implied, of merchantability, fitness or otherwise concerning the use of this product other than as indicated on the label. User assumes all risks of use, storage or handling not in strict accordance with accompanying directions.

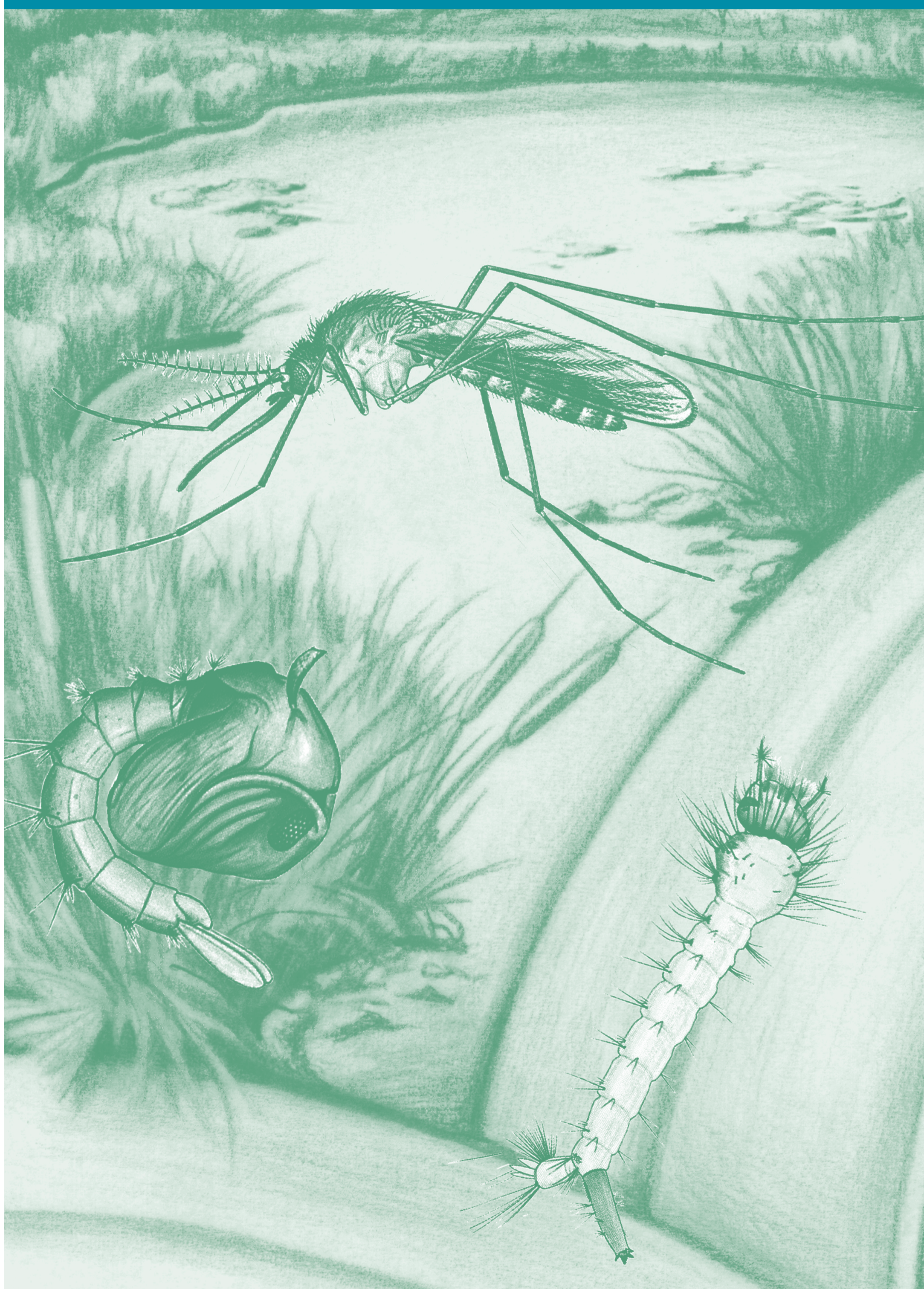
Net Contents:  
40 Pounds (18.1 Kg)

**VECTOLEX<sup>®</sup> CG**  
Biological Larvicide

Biological Larvicide

# VectoLex<sup>®</sup> CG

40 Pounds (18.1 Kg)



ACTIVE INGREDIENT:  
*Bacillus sphaericus* Serotype H5a5b,  
strain 2362 Technical Powder  
(670 BsITU/mg).....7.5%  
OTHER INGREDIENTS .....92.5%  
TOTAL .....100.0%

Potency: This product contains  
50 BsITU/mg or  
0.023 Billion BsITU/lb

Expiration Date: (Two years from  
date of manufacture).

The percent active ingredient does  
not indicate product performance  
and potency measurements are not  
federally standardized.

EPA Reg. No. 73049-20  
EPA Est. No. 33762-IA-001

**KEEP OUT OF REACH  
OF CHILDREN**

**CAUTION**

**VALENT BIOSCIENCES<sup>®</sup>**  
CORPORATION



# VectoLex<sup>®</sup> CG

Biological Larvicide

Net Contents:  
40 Pounds (18.1 Kg)

## VectoLex<sup>®</sup> CG Biological Larvicide Granules

### FIRST AID

<b>If in eyes</b>	<ul style="list-style-type: none"><li>• Hold eye open and rinse slowly and gently with water for 15-20 minutes.</li><li>• Remove contact lenses, if present, after the first 5 minutes, then continue rinsing eye.</li><li>• Call a poison control center for treatment advice.</li></ul>
<b>If on skin or clothing</b>	<ul style="list-style-type: none"><li>• Take off contaminated clothing.</li><li>• Rinse skin immediately with plenty of water for 15-20 minutes.</li><li>• Call a poison control center or doctor for treatment advice.</li></ul>

### HOT LINE NUMBER

Have the product container or label with you when calling a poison control center or doctor, or going for treatment. You may also contact 1-877-315-9819 (24 hours) for emergency medical treatment and/or transport emergency information. For all other information, call 1-800-323-9597.

### PRECAUTIONARY STATEMENTS HAZARDS TO HUMANS AND DOMESTIC ANIMALS

## CAUTION

Harmful if absorbed through the skin. Causes moderate eye irritation. Avoid contact with skin, eyes, or clothing. Wash thoroughly with soap and water after handling.

Repeated exposure to high concentrations of microbial proteins can cause allergic sensitizations.

### ENVIRONMENTAL HAZARDS

Do not contaminate water when disposing of equipment washwaters or rinsate. Do not apply directly to treated, finished drinking water reservoirs or drinking water receptacles when the water is intended for human consumption.

### DIRECTIONS FOR USE

It is a violation of Federal law to use this product in a manner inconsistent with its labeling.

### STORAGE AND DISPOSAL

Do not contaminate water, food, or feed, by storage or disposal. Do not contaminate water when disposing of equipment washwaters.

**PESTICIDE STORAGE:** Store in a cool, dry place.

**PESTICIDE DISPOSAL:** Wastes resulting from the use of this product may be disposed of on site or at an approved waste disposal facility.

**CONTAINER DISPOSAL:** Nonrefillable container. Do not reuse or refill this container. Offer for recycling, if available. Completely empty bag into application equipment. Then dispose of empty bag in a sanitary landfill or by incineration, or, if allowed by State and local authorities, by burning. If burned, stay out of smoke.

©2009

**VALENT BIOSCIENCES<sup>®</sup>**  
CORPORATION  
870 TECHNOLOGY WAY, SUITE 100  
LIBERTYVILLE, IL 60048