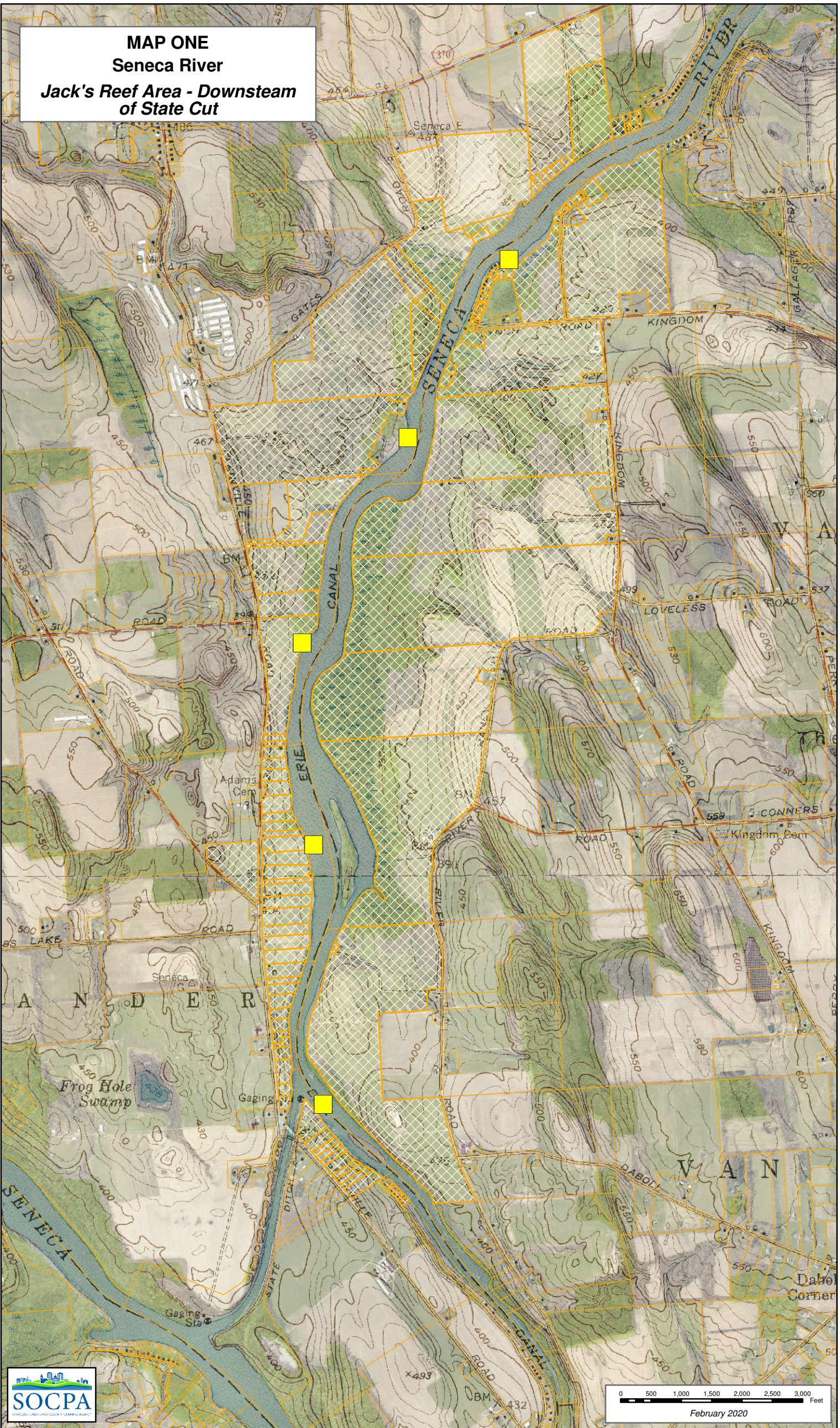
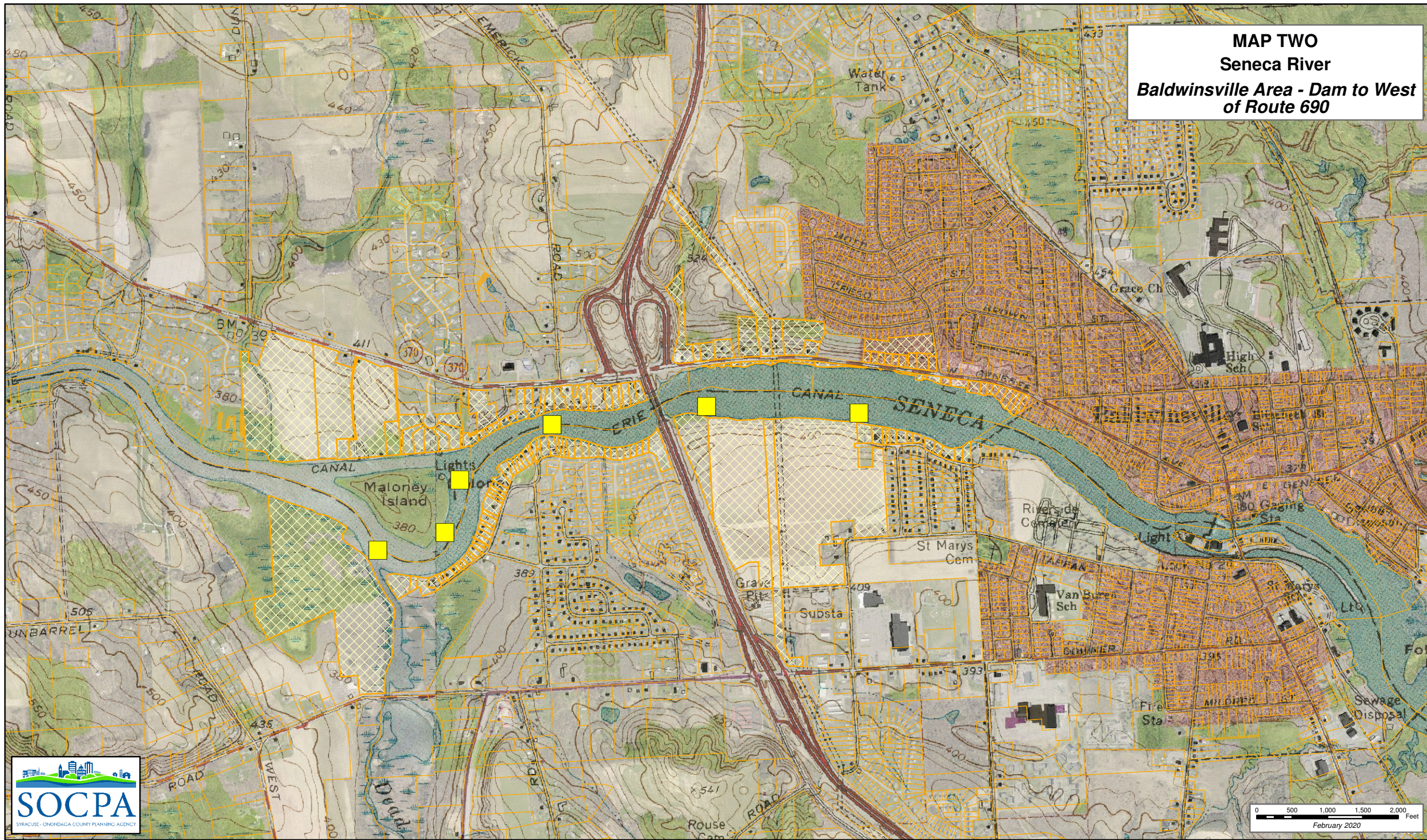


**MAP ONE**  
**Seneca River**  
**Jack's Reef Area - Downstream**  
**of State Cut**





**MAP TWO**  
**Seneca River**  
**Baldwinsville Area - Dam to West**  
**of Route 690**





**MAP THREE**  
**Seneca River**  
**Onondaga Lake Outlet Area**





**MAP FOUR**  
**Seneca River**  
**Doyle Road Area**  
**South of Wetzel**  
**Road Treatment Plant**





**MAP FIVE**  
**Seneca River**  
**Belgium and Three Rivers**  
**Area - North of the**  
**Belgium Bridge**

