

12/17/10 Fiscal Year:  
means

ONONDAGA COUNTY

2010  
Third Quarter Indicators Report

Key Economic and Fiscal Indicators

Inside this issue:

Indicator	Period	2010	2009	Page
2010 Third Quarter Forecast Projection of Total Key Revenues and Expenditures (in millions)	Q3			2
Unemployment Rate: Onondaga County	September	7.3%	7.8%	3
Employed Persons by Month (in 000's): Onondaga County	September	217.4	215.7	3
Employed Persons yr-over-yr (in 000's): Onondaga County	September	1.7	(8.5)	3
Overall Consumer Confidence: Syracuse MSA	Q3	60.3	59.7	4
Consumer Price Index (all items) - Inflation Rate	September	1.1%	(1.3%)	4
Weighted Average County Interest Rate	September	0.84%	1.34%	4
Reconciled Quarterly Sales Tax Collections % Chg YTD	Q3	5.4%	(7.4%)	4
Auto Sales CYTD: Onondaga County	September	16,420	15,155	5
Gasoline Prices per gallon paid by Onondaga County	September	\$2.13	\$1.91	5
Retail Gasoline Prices per gallon in Upstate NY	September	\$2.74	\$2.73	5
Lis Pendens CYTD	September	1,115	1,138	5
Existing Home Sales CYTD: Onondaga County	September	2,625	2,692	5
Average Median Home Price YTD: Onondaga County	September	\$145,000	\$134,700	5
Average Monthly Public Assistance Caseloads YTD	September	5,630	4,970	6
Average Monthly Medicaid Caseloads YTD	September	49,745	44,933	6

CYTD = Cumulative Year to Date

## Onondaga County: 2010 Third Quarter Forecast

Projection of Key Revenues and Expenditures (In millions)

	2007	2008	2009	2010	2010	2010	2010	2010
	Actual	Actual	Actual	Adopted	Modified	Forecast	Gross Surplus/ (Deficit)	Local Surplus/ (Deficit)
<b>Major Key Revenues</b>								
Sales Tax	140.0	143.1	128.5	129.5	129.5	143.4	13.9	13.9
Def/Uncollected Taxes	(8.1)	(10.4)	(12.1)	(9.6)	(9.6)	(12.4)	(2.8)	(2.8)
Prior Year Taxes	6.7	5.4	6.8	7.3	7.3	3.5	(3.8)	(3.8)
Int & Penalties - Prior Yr	4.9	5.5	5.9	5.1	5.1	5.3	0.2	0.2
Interest & Earnings	5.1	3.1	1.1	0.9	0.9	0.9	-	-
County Tax Lien Sales	-	-	11.3	-	-	-	-	-
FMAP Rev/Reconciliation	-	-	9.2	-	-	4.7	4.7	4.7
All Other Revenues	<u>17.8</u>	<u>16.4</u>	<u>16.9</u>	<u>21.0</u>	<u>21.0</u>	<u>20.8</u>	<u>(0.2)</u>	<u>(0.2)</u>
<b>Subtotal -- Major Key Revenues</b>	<b>166.4</b>	<b>163.1</b>	<b>167.6</b>	<b>154.2</b>	<b>154.2</b>	<b>166.3</b>	<b>12.1</b>	<b>12.1</b>
<b>Major Key Expenditures</b>								
Salaries & Wages	92.5	97.6	99.0	98.2	98.2	96.2	(2.0)	(1.8)
Anticipated Salary Settlement	-	0.4	-	1.0	1.0	1.6	0.6	0.6
Debt Service	15.5	17.1	17.5	15.4	15.4	15.3	(0.1)	(0.1)
Emp Benefits (Gen'l Fnd)	59.5	60.8	60.3	65.6	65.6	65.5	(0.1)	(0.1)
Mtce, Utilities and Rents	15.4	16.0	15.4	16.3	17.2	16.6	(0.6)	(0.4)
DSS Administration	61.4	63.7	64.9	65.5	65.5	65.1	(0.4)	0.3
Medicaid	92.2	92.3	94.1	97.0	97.0	97.0	-	-
FMAP Red of Expend.	-	-	(10.3)	(13.7)	(13.7)	(13.7)	-	-
IGT	-	-	0.7	-	-	-	-	-
Safety Net	13.0	13.1	16.7	17.2	17.2	19.3	2.1	1.1
Family Assistance	18.2	15.9	22.1	18.5	18.5	21.2	2.7	(0.2)
Juvenile Delinquent	2.3	2.8	3.1	3.6	3.6	2.9	(0.7)	(1.0)
NYS Training	1.5	1.8	1.9	2.4	2.4	3.4	1.0	1.0
Foster Care	26.8	27.3	23.9	27.0	27.0	24.8	(2.2)	(1.8)
Day Care	13.1	13.6	15.4	14.9	14.9	17.1	2.2	0.3
Preschool Handicapped	39.2	42.3	42.4	47.4	47.4	44.8	(2.6)	-
DSS Purchase of Svcs.	9.0	9.3	9.0	10.2	10.2	9.6	(0.6)	(0.4)
Sheriff's Overtime	4.4	5.6	3.8	4.1	4.1	4.5	0.4	0.4
Corrections Overtime	1.1	1.0	0.7	0.8	0.8	0.8	0.0	0.0
Correctional Health Care	2.4	2.5	2.6	2.8	2.8	2.8	0.0	0.0
All Other Accounts	<u>62.8</u>	<u>57.9</u>	<u>53.0</u>	<u>48.7</u>	<u>48.8</u>	<u>49.1</u>	<u>0.3</u>	<u>0.3</u>
<b>Subtotal -- Major Expense</b>	<b>530.3</b>	<b>541.1</b>	<b>536.2</b>	<b>542.9</b>	<b>543.9</b>	<b>543.9</b>	<b>(0.1)</b>	<b>(1.7)</b>

**Total - Key Items**

**13.8**

### Unemployment Rate

September, 2000 - 2010 (not seasonally adjusted)

Year	United States	New York State	Syracuse MSA <sup>2</sup>	Onondaga County
2000	3.9	4.3	3.5	3.4
2001	5.0	5.0	4.3	4.2
2002	5.7	5.7	4.6	4.6
2003	6.1	6.3	5.5	5.1
2004	5.4	5.3	4.9	4.8
2005	5.0	5.0	4.7	4.5
2006	4.5	4.3	4.4	4.2
2007	4.7	4.5	4.3	4.1
2008	6.2	5.5	5.5	5.4
2009	9.8	8.7	8.0	7.8
2010	9.6	8.0	7.5	7.3

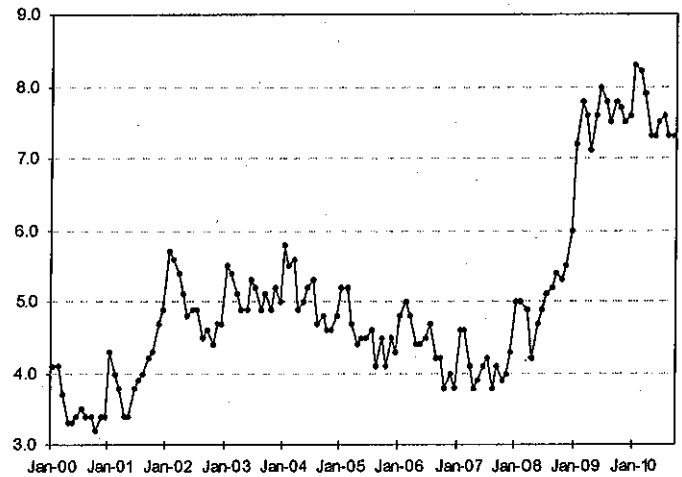
<sup>1</sup> U.S. unemployment rates are Seasonally Adjusted.  
<sup>2</sup> Syracuse MSA includes Onondaga, Oswego and Madison county.

Source: Bureau of Labor Statistics, New York State Department of Labor

NOTE: All employment data is preliminary and subject to revisions.

### Unemployment Rate

Onondaga County, January 2000 - September 2010

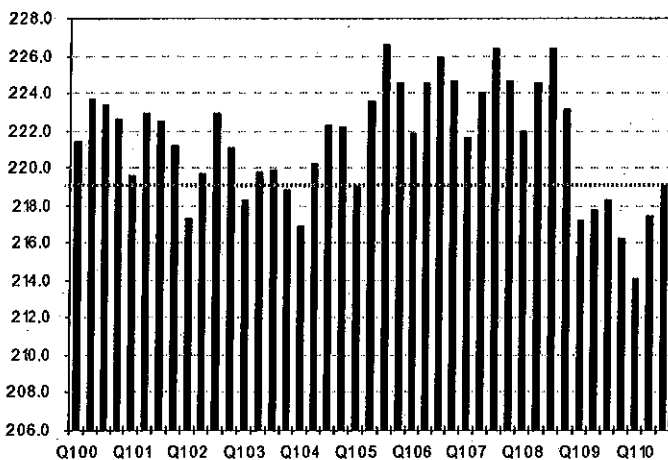


Source: U.S. Bureau of Labor Statistics, New York State Department of Labor

The unemployment rate in Onondaga County stood at 7.3% in September 2010—down from 7.8% in June 2009 and from 8.3% in January 2010.

### Average Employed Persons by Quarter

Onondaga County, Third Quarter 2000 - Third Quarter 2010 (in 000's)

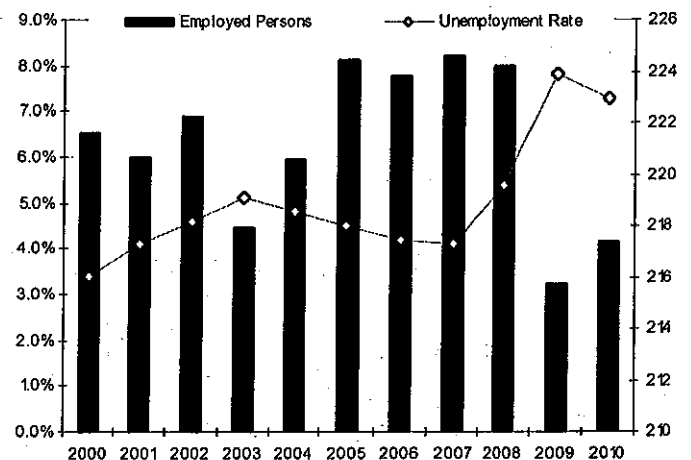


Employment accounts for Onondaga County residents only.  
 Source: New York State Department of Labor

The third quarter 2010 average employed persons is the highest it's been since the fourth quarter 2008 level of employed persons. The local economy may be showing signs of recovery.

### Labor Force

Onondaga County, September, 2000 - 2010 (in thousands)

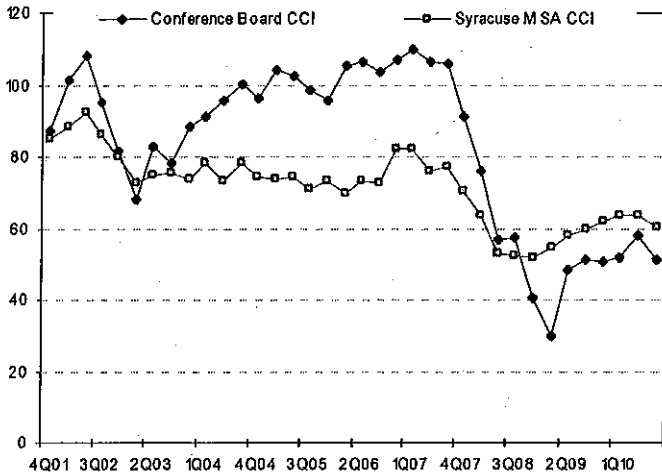


Employment accounts for Onondaga County residents only.  
 Source: New York State Department of Labor

There were 217,400 employed persons in September 2010 or 1,700 more than in September 2009. The labor force numbers came in at 234,600 in June 2010 or 700 more over the same time period.

### Consumer Confidence

Fourth Quarter 2001 - Third Quarter 2010

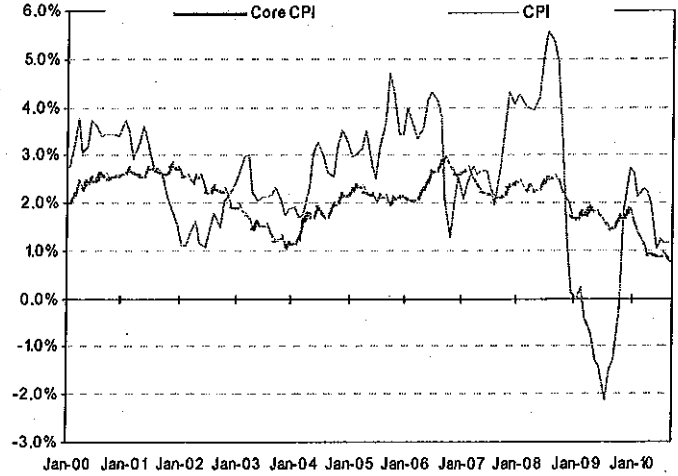


Source: The Conference Board, Siena College Research Institute

"September's pull-back in confidence was due to less favorable business and labor market conditions, coupled with a more pessimistic short-term outlook," said Lynn Franco, director of Conference Board's consumer research center, in a statement.

### Consumer Price Index

U.S. City Average Inflation, Jan 2000 - Sep 2010 (1982-1984 = 100)

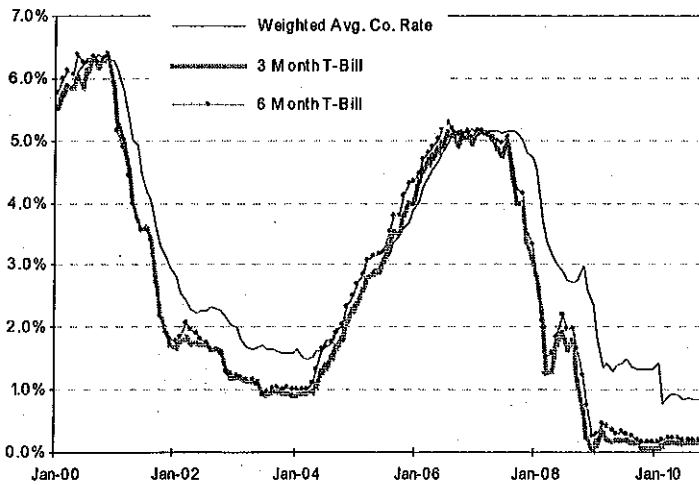


Source: Bureau of Labor Statistics (data not seasonally adjusted)

A line graph most clearly represents the extreme volatility of the nations inflation rates. As of January 2010, the inflation rate has fallen from 2.6% to 1.1% in September 2010. The core CPI measures inflation excluding food and energy items. This Fed aims to steady core inflation rates around 2.0%. As of September the core inflation rate stood at 0.8%.

### Weighted Average County Interest Rate

Onondaga County, January 2000 - September 2010

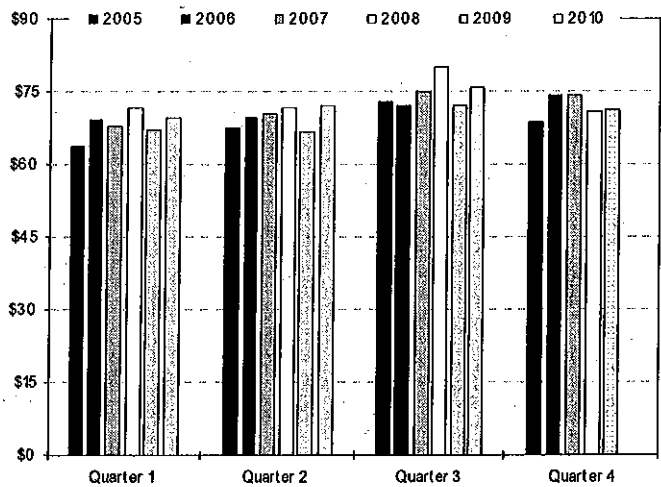


Source: Federal Reserve Board and Division of Management and Budget

The County's weighted average interest earnings rate stood at 0.84% in September 2010 versus 1.34% in September 2009. The 3 and 6 month T-bills have fallen significantly since 2008. The 3 and 6 month T-bills rates are at 0.15% and 0.19%, respectively, in September 2010.

### NYS Reconciled Sales Tax Collections

Onondaga County, First Quarter 2000 - Third Quarter 2010 (in millions)

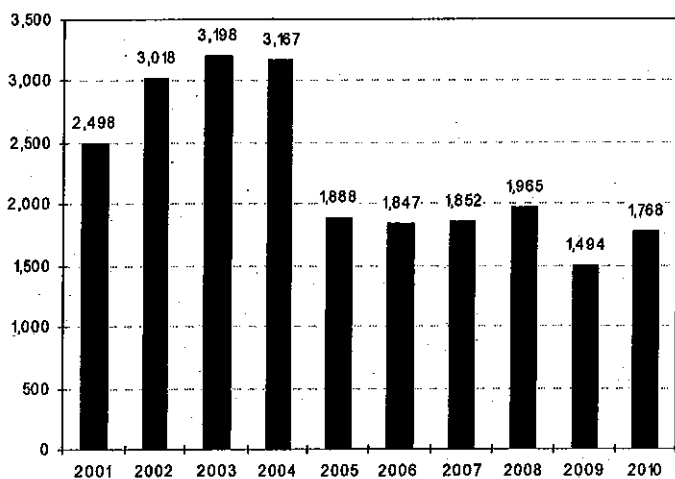


Compiled by Division of Management and Budget

The cumulative New York State Reconciled Sales Tax Collection rate came in at \$217.6M third quarter 2010. Compared to the same period in 2009, the collection rate was 5.4% higher in 2010.

## Auto Sales

Onondaga County, September, 2001 - 2010 (In 000's)

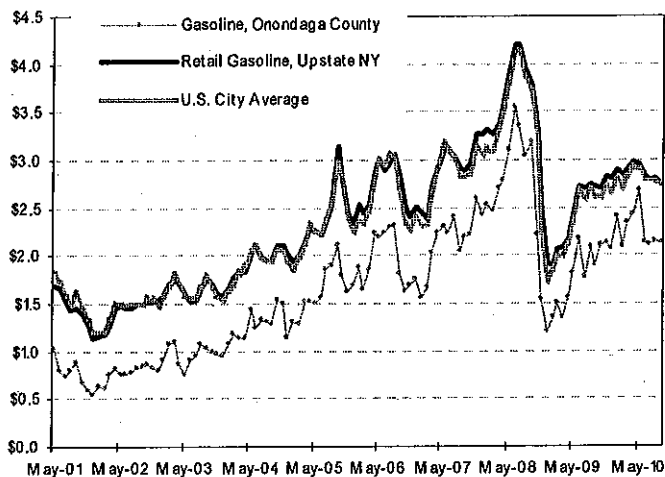


Source: R.L. Polk

Year-to-date 2010, cumulative auto sales totaled 16,420 which is up 8.3% over the same time period last year. Year over year, September auto sales are up 18.3% over September 2009.

## Gasoline Prices

May 2001 - September 2010 (NOTE: County prices are tax exempt)

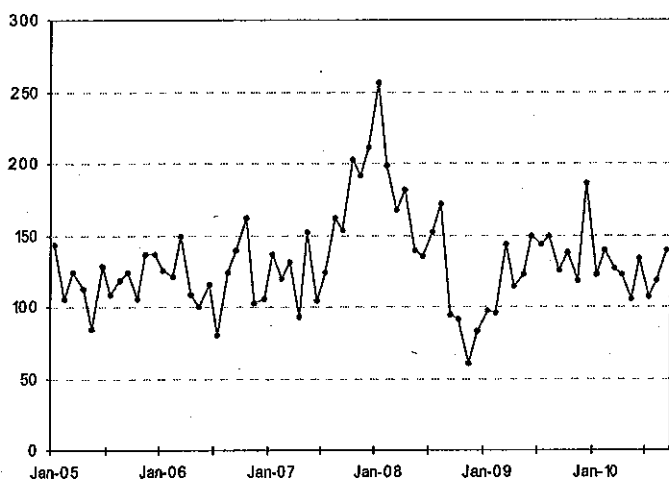


Source: NYSDERDA and Bureau of Labor Statistics

In July 2008, gasoline prices peaked at over \$4.00/gallon after which prices rapidly descended to just over \$1.50/gallon by the end of 2008. Prices have since risen and have stabilized near \$2.50/gallon. Through September, Onondaga County has paid an average of \$2.30/gallon for gasoline in 2010. On average, gasoline prices paid by Onondaga County rise approximately \$.30/gallon each year.

## Lis Pendens

Onondaga County, January 2005 - September 2010

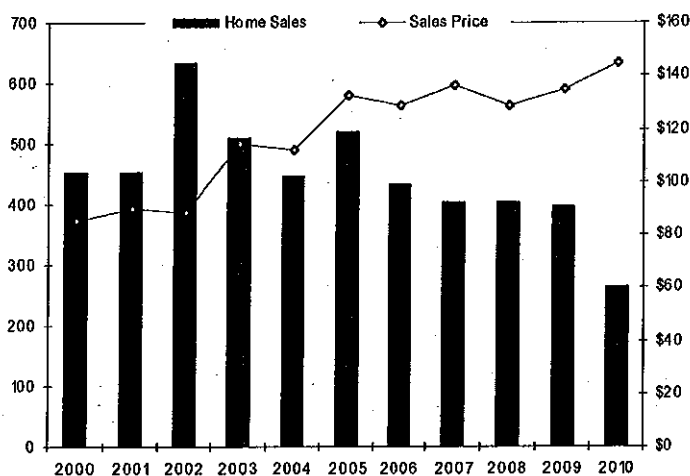


Source: Onondaga County Clerk's Office

Lis pendens is the first step in the filing for foreclosure. It is a clear indication of housing market sentiment and consumers well being. With the recession, came and onslaught of foreclosures which has since settled. Year-to-date between January and September 2010, lis pendens counts in Onondaga County totaled 1,115 or 2.0% fewer over last year during the same time period.

## Residential Real Estate Activity

Onondaga County, September, 2000 - 2010

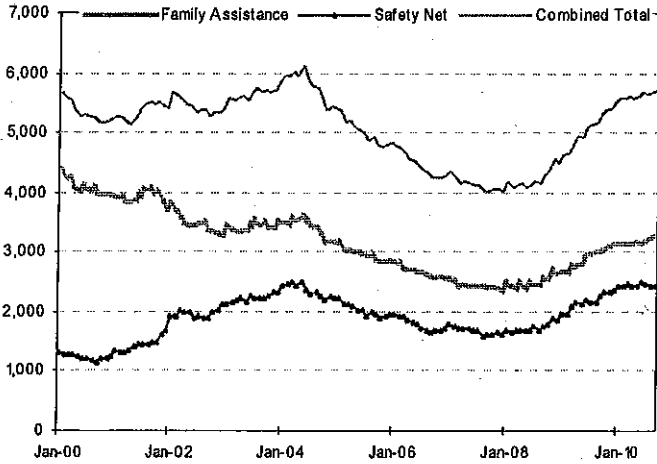


Source: Greater Syracuse Association of Realtors

In September 2010, home sales were down 33.3% over September 2009, while the median sales prices rose 7.4% to \$145,000 over the same time period. In 1998 the average monthly median sales price was \$82,017.

### Public Assistance Caseloads

Onondaga County, January 2000 - September 2010 (in thousands)

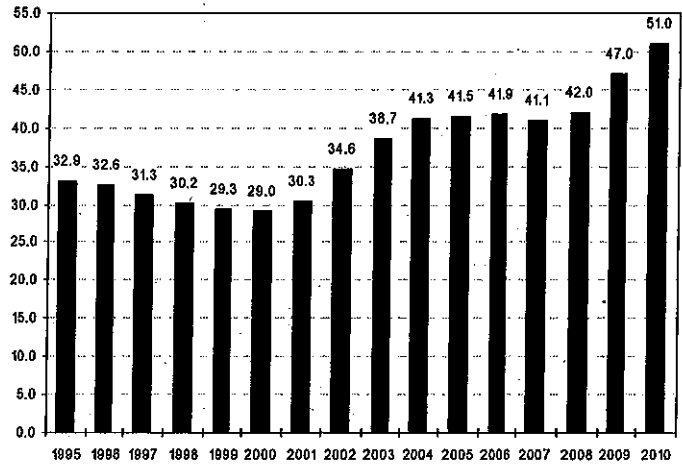


Compiled by the Division of Management and Budget

Public Assistance caseloads continue to rise — a natural extension of an economic downturn. In September 2010, Family Assistance cases were 8.9% higher and Safety Net cases were 5.2% higher over September 2009. The Combined Total number of cases was 7.3% higher over the same time period.

### Medicaid Caseloads

Onondaga County, September, 2000 - 2010 (in thousands)



Compiled by Division of Management and Budget

In September 2010, there were 4,037 more cases or 8.6% more than in September 2009. Between January and September 2010, there was an increase of 3,017 Medicaid cases. The data represents monthly family caseloads [not individual] and includes Medicaid (non Temporary Assistance), SSI, and Temporary Assistance (Family Assistance and Safety Net).

#### Medicaid Cost Cap

Responding to widespread concerns raised by counties, New York State implemented a plan to "cap" local Medicaid costs which began January 1, 2006. The costs were capped at a growth rate of 3.5% over 2005 costs. This rate then dropped to 3.25% in 2007 and dropped again permanently to 3.0% in 2008. Beginning in 2008, counties had the decision to pay the State a local contribution of Medicaid costs based on predetermined payment of either the 3.0% on the prior year's base or a fixed percentage of sales tax revenue (based on the 2006—07 capped contribution and local sales tax base). Onondaga County chose to pay the State a local contribution of Medicaid costs of 3.0% on the prior year's base.

All information has been compiled by :

**Onondaga County**  
 Division of Management and Budget  
 John H. Mulroy Civic Center, 14th Floor  
 421 Montgomery Street  
 Syracuse, NY 13202  
 Phone: 315.435.3346  
 Fax: 315.435.3439  
 Website: www.ongov.net

DEPARTMENT OF TAXATION & FINANCE  
OFFICE OF TAX POLICY ANALYSIS  
SALES TAX QUARTERLY REPORT  
CASH COMPARISON  
QUARTER ENDED SEPTEMBER 2010

CITIES	JUL-SEP 10		JUL-SEP 09		CUMULATIVE 10		CUMULATIVE 09		CASH		% Change
	CASH	Change	CASH	Change	CASH	Change	CASH	Change	CASH	Change	
Toga	4,669,122.06	(205,295.30)	4,874,417.36	-4.21%	12,157,516.56	14,746,699.47	(2,589,182.91)	-17.56%			
Schuyler	2,726,856.74	(191,101.60)	2,917,958.34	-6.55%	6,171,494.19	6,881,653.14	(710,158.95)	-10.32%			
Hamilton	862,231.35	(144,318.48)	1,006,549.83	-14.34%	1,858,634.10	1,967,309.39	(108,675.29)	-5.52%			
Orleans	3,214,965.66	(306,985.69)	3,521,951.35	-8.72%	9,800,439.07	10,354,045.65	(553,606.58)	-5.35%			
Sullivan	9,495,109.97	(134,666.61)	9,629,776.58	-1.40%	24,917,123.73	26,135,978.58	(1,218,854.85)	-4.66%			
Seneca	5,708,711.96	23,491.41	5,685,220.55	0.41%	15,218,323.03	15,801,736.54	(583,413.51)	-3.69%			
Wyoming	3,718,737.37	(143,037.15)	3,861,774.52	-3.70%	10,632,980.63	11,025,638.51	(392,657.88)	-3.56%			
Washington	4,219,091.43	112,492.27	4,106,599.16	2.74%	12,112,733.07	12,366,321.06	(253,587.99)	-2.05%			
Delaware	4,276,925.41	(676,401.26)	4,953,326.67	-13.66%	13,176,711.16	13,416,601.49	(239,890.33)	-1.79%			
Genesee	9,208,376.99	8,867,922.77	8,867,922.77	3.84%	24,352,013.62	24,744,295.41	(392,281.79)	-1.59%			
Rockland	41,450,315.69	(219,987.29)	41,670,302.98	-0.53%	122,556,725.95	124,122,301.78	(1,565,575.83)	-1.26%			
Broome	26,842,396.55	703,939.74	26,138,456.81	2.69%	78,965,206.79	79,948,974.88	(983,768.09)	-1.23%			
Cayuga	8,114,355.01	234,445.20	7,879,909.81	2.98%	22,544,226.42	22,819,439.66	(275,213.24)	-1.21%			
Columbia	8,161,269.05	473,774.73	7,687,494.32	6.16%	22,509,632.21	22,685,609.77	(175,977.56)	-0.78%			
Greene	6,766,534.20	221,739.81	6,544,794.39	3.39%	19,060,574.16	19,165,156.57	(104,582.41)	-0.55%			
Yates	2,661,598.83	(47,910.96)	2,709,509.79	-1.77%	6,795,395.95	6,827,594.90	(32,188.95)	-0.47%			
Clinton	12,230,909.41	46,312.37	12,184,597.04	0.38%	34,890,070.05	34,935,295.42	(45,225.37)	-0.13%			
Erie	166,379,593.69	4,396,723.62	161,982,870.07	2.71%	481,037,320.03	478,954,899.07	2,082,420.96	0.43%			
Albany	55,649,554.75	1,855,568.80	53,793,985.95	3.45%	165,556,473.03	164,669,236.00	887,237.03	0.54%			
Warren	13,135,069.92	329,379.01	12,805,690.91	2.57%	32,547,020.50	32,259,276.32	287,744.18	0.89%			
Fulton	4,426,544.26	(3,699.66)	4,430,243.92	-0.08%	12,908,515.36	12,785,270.92	123,244.44	0.96%			
Otsego	9,135,100.65	216,115.92	8,918,984.73	2.42%	24,071,520.25	23,830,808.31	240,711.94	1.01%			
Cattaraugus	8,308,982.02	(158,799.31)	8,467,781.33	-1.88%	24,843,205.74	24,575,014.97	268,190.77	1.09%			
Schenectady	20,505,262.71	929,582.19	19,575,680.52	4.75%	61,607,287.23	60,764,816.61	842,470.62	1.39%			
Rensselaer	17,395,364.26	1,151,362.16	16,244,002.10	7.09%	50,602,939.45	49,877,865.58	725,073.87	1.45%			
Niagara	25,848,460.98	1,102,176.73	24,746,284.25	4.45%	74,693,277.90	73,555,743.08	1,137,534.82	1.55%			
Allegany	4,789,193.65	250,939.79	4,538,253.86	5.53%	13,206,481.83	12,987,882.55	218,599.28	1.68%			
Wayne	9,305,762.15	25,441.73	9,280,320.42	0.27%	26,333,977.25	25,890,484.24	443,493.01	1.71%			
Herkimer	7,477,206.53	5,398.14	7,471,808.39	0.07%	20,214,756.41	19,815,752.05	399,004.36	2.01%			
Putnam	12,496,269.17	410,077.24	12,086,191.93	3.39%	34,991,382.55	34,197,620.24	793,762.31	2.32%			
St. Lawrence	10,258,865.92	762,350.44	9,496,515.48	8.03%	29,294,591.63	28,623,810.39	670,781.24	2.34%			
Chautauqua	14,609,502.98	209,427.48	14,400,075.50	1.45%	40,515,499.68	39,524,818.37	990,681.31	2.51%			
Montgomery	6,357,595.84	294,725.63	6,062,870.21	4.86%	18,194,433.19	17,733,150.63	461,282.56	2.60%			
Tompkins	11,248,405.63	283,922.87	10,964,482.76	2.59%	32,584,228.40	31,693,629.41	890,598.99	2.81%			
Orange	57,224,095.38	166,416.52	57,057,678.86	3.68%	165,452,622.81	163,078,519.52	2,374,103.29	3.18%			
Chemung	4,691,268.64	2,991,304.78	4,524,952.12	5.52%	13,494,636.49	13,078,519.52	416,116.97	3.18%			
Oneida	31,083,914.89	94,200.59	30,989,714.30	0.30%	90,321,090.38	87,444,900.16	2,876,190.22	3.29%			
Franklin	5,304,351.49	501,835.32	4,802,516.17	10.45%	14,564,287.64	14,096,560.97	467,726.67	3.32%			
Essex	7,144,488.19	509,464.84	6,635,023.35	7.68%	16,956,346.91	16,558,258.83	398,088.08	3.42%			
Montroe	101,365,046.00	(80,772.91)	101,445,818.91	-0.08%	298,208,557.89	287,063,222.58	11,145,335.31	3.88%			
Madison	5,903,788.24	181,690.74	5,722,097.50	3.18%	16,708,519.34	16,058,260.51	650,258.83	4.05%			
Suffolk	302,363,970.69	15,784,542.66	286,579,428.03	5.51%	846,038,112.00	809,961,548.93	36,076,563.07	4.45%			
Ulster	25,467,066.24	1,039,739.48	24,427,326.76	4.26%	72,092,504.44	68,907,328.50	3,185,175.94	4.62%			
-Oswego	9,942,187.29	269,897.26	9,672,290.03	2.79%	27,952,749.85	26,682,430.17	1,270,319.68	4.76%			
Steuben	11,154,699.53	411,429.23	10,743,270.30	3.83%	31,066,964.15	29,654,028.90	1,412,935.25	4.76%			
Livingston	6,858,929.94	283,984.25	6,574,945.69	4.32%	19,465,489.75	18,552,599.82	912,889.93	4.92%			
Cortland	6,159,774.49	313,667.37	5,846,107.12	5.37%	16,138,211.01	17,246,078.85	(1,107,867.84)	-6.73%			
Ortndaga	75,802,231.06	3,520,393.69	72,281,837.37	4.87%	217,588,171.89	206,379,080.51	11,209,091.38	5.43%			
Westchester	109,761,932.99	4,987,107.65	104,774,825.34	4.76%	329,592,705.22	310,747,021.46	18,845,683.76	6.06%			

**FUND BALANCE PROJECTION**                      **3rd Q - 2010**

Unreserved Fund Balance 12/31/09 *	\$	72.3
Appropriated 2010 Budget	\$	(7.9)
Appropriated 2011 Budget	\$	(1.7)
Projected Unreserved Balance	\$	<u>62.7</u>
Est. 2010 Surplus	\$	13.8
Projected Unreserved Balance	\$	<u>76.5</u>
Est. Fund Balance Designations:		
ERI	\$	(5.0)
A-B Tax Settlement	\$	<u>(0.2)</u>
Total Est. Reserves	\$	<u>(5.2)</u>
Final Unreserved Fund Balance	\$	71.3
Adopted Net Revenues 2011	\$	641.4
Fund Balance Percentage		11.12%

\* Does not include reserve for prepaids