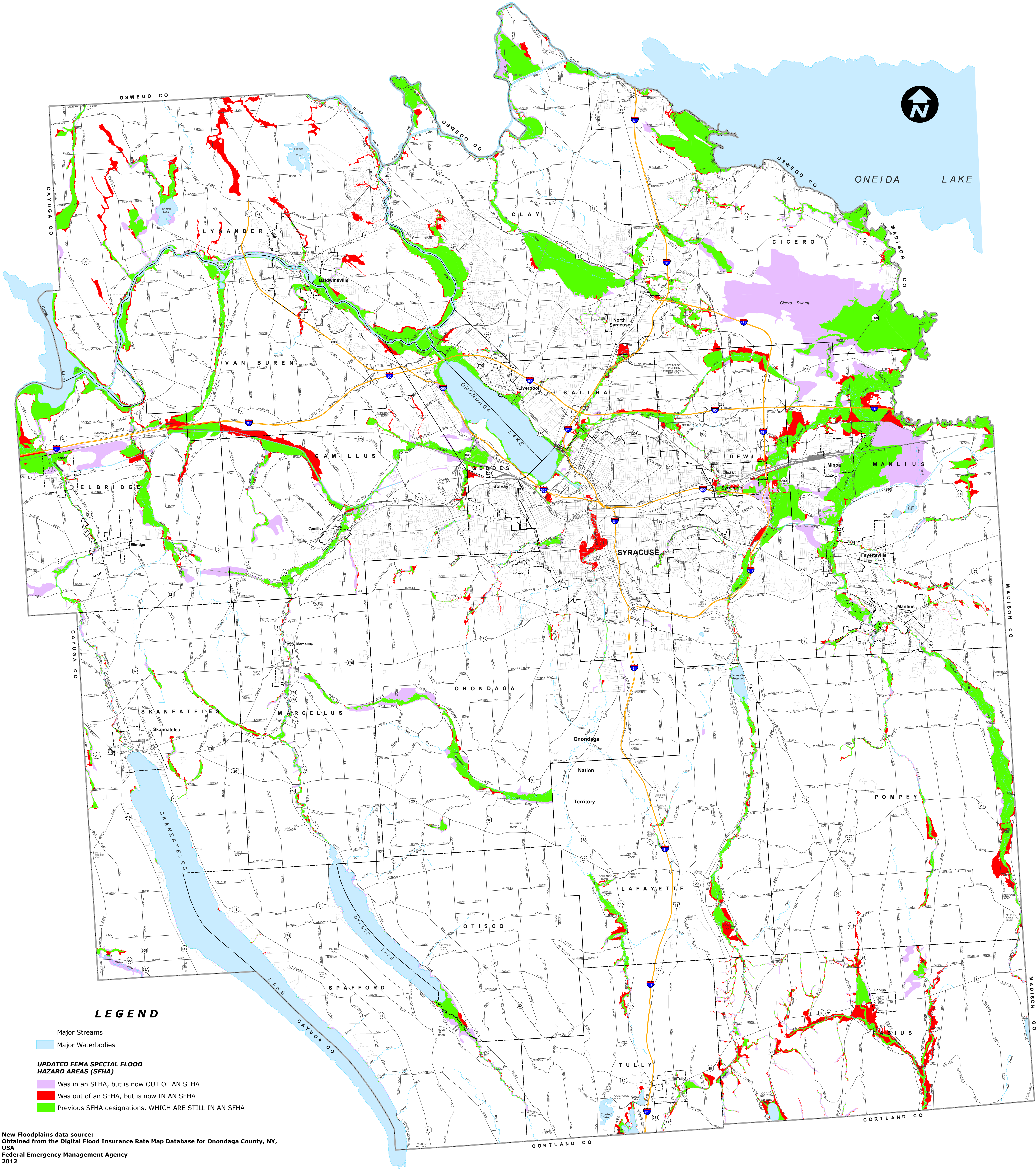


FEMA Floodplain Changes in Onondaga County (2012)



Disclaimer:
THIS IS NOT AN OFFICIAL FEMA MAP.
This map is intended for general planning purposes only. It should not be used to determine if a property is located in a SFHA. To determine if a property is located in a SFHA, refer to the preliminary flood insurance rate maps located at www.rampp-team.com/ny.htm, or contact FEMA (1-877-FEMA-MAP).

0 1 2 3 4 5 Miles

NOTE: This map was created by the Syracuse-Onondaga County Planning Agency (SOCPA) GIS division using existing (1980's) and preliminary (2012) FEMA floodplain data. Road, stream, and waterbody data were developed by SOCPA using New York State Digital Orthoimagery dated 2006.